

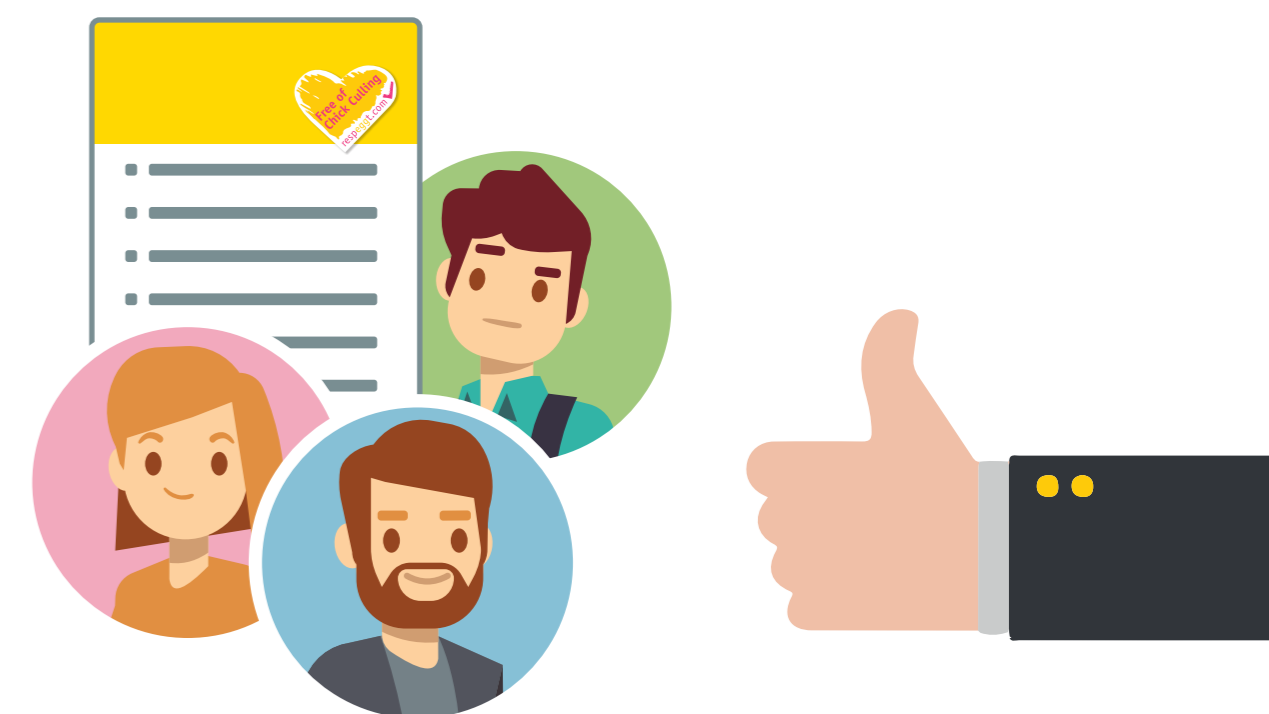
# The 7 respeggt rules

Requirements for egg processing plants



1

All employees must know and follow the respeggt rules for the handling of respeggt eggs.



2

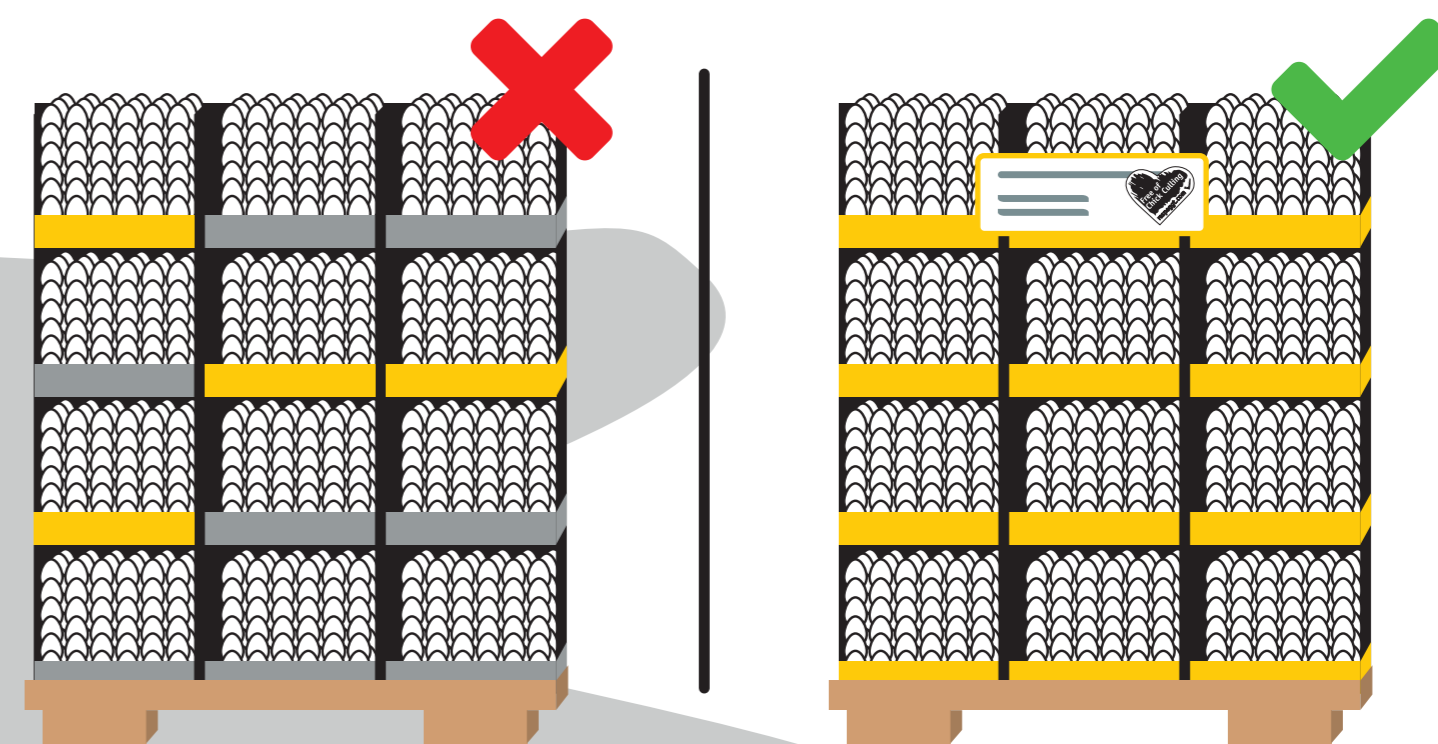


PRODUCER CODE

During the **control of incoming goods**, the respeggt eggs must be checked for authenticity by referring to the producer code.

3

The respeggt eggs must always be internally transported and stored **separately** from conventional eggs.



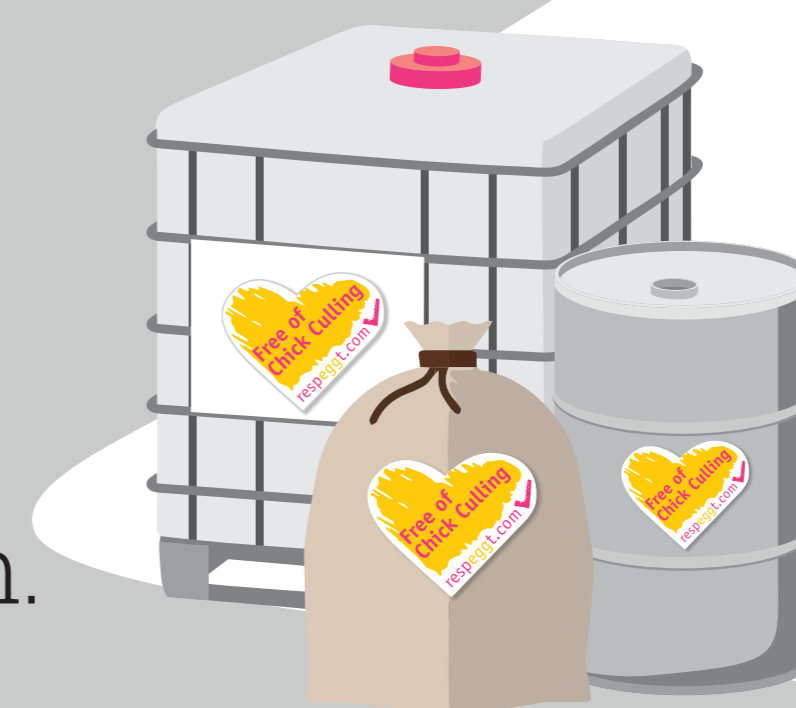
4



The use of respeggt eggs for producing respeggt egg products always requires the specification **respeggt FoCC** (Free of Chick Culling) in the merchandise management system.

5

The finished respeggt egg products must be marked with the heart-shaped respeggt label or the reference **respeggt FoCC** (Free of Chick Culling) in the merchandise management system.



6

All relevant documentation, such as delivery notes, transport documents and invoices, must always be marked with the reference **respeggt FoCC** (Free of Chick Culling) or with the respeggt document stamp.



7



Employees of **respeggt group** may visit the egg processing plant at any time.